



A Journey of Action & Excellence

When our Students Succeed, We All Succeed!

(Post Hurricane Irma and Hurricane Maria Status Report)

Sharon Ann McCollum, Ph.D.
Commissioner of Education
Virgin Islands Department of Education
February 16, 2018

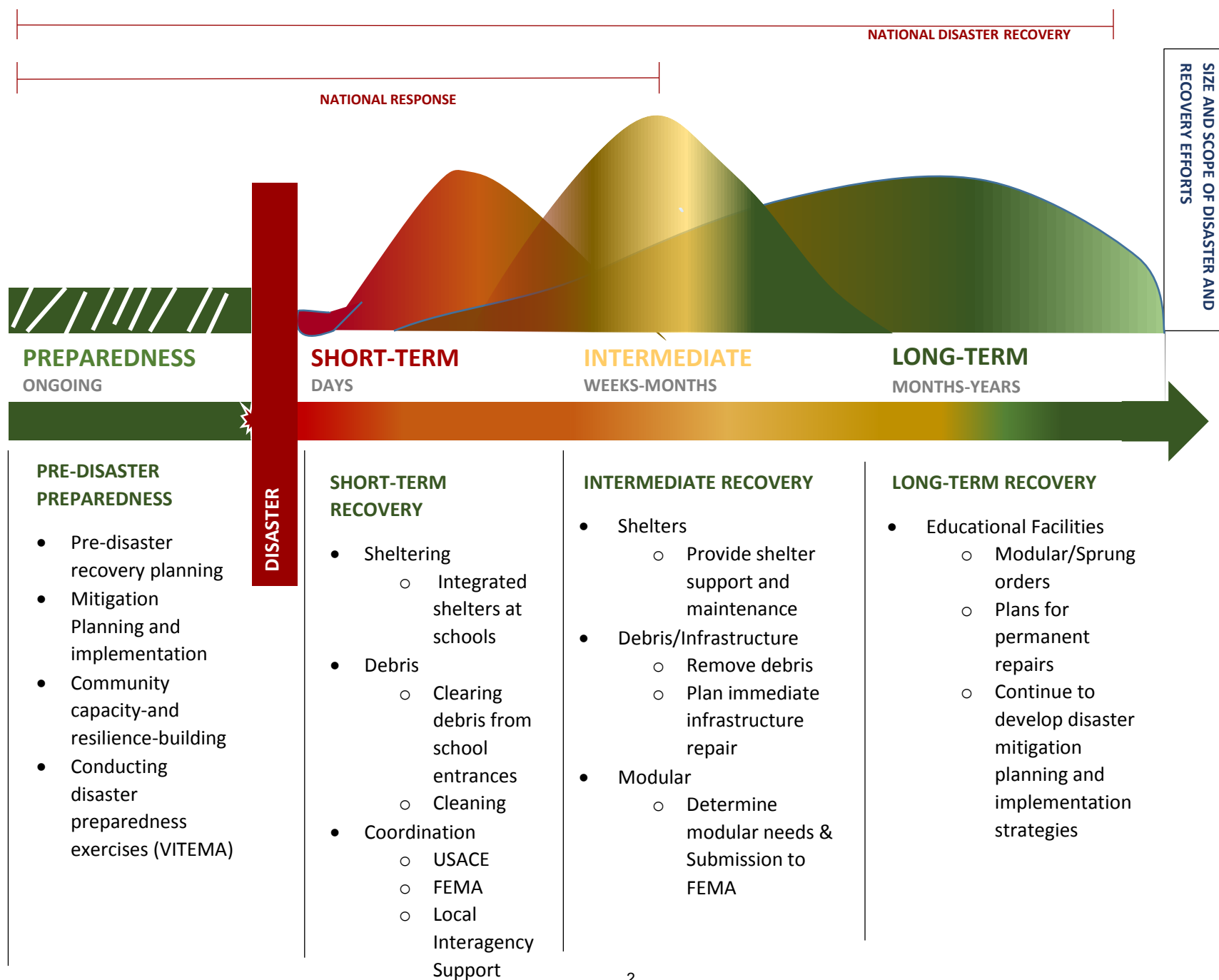
Table of Contents

INTRODUCTION.....	1
DISASTER MANAGEMENT CONTINUUM.....	2
STUDENT ENROLLMENT	3
PERSONNEL.....	3
UNAPOLOGETIC URGENCY	4
Assessing Our Facilities	4
ACHIEVING NORMALCY	5
Instructional Education Facilities	5
State Operational Education Facilities	5
STRATEGIC APPROACH	6
Local Educational Agency	6
State Educational Agency	6
MODULAR AND SPRUNG STRUCTURES.....	7
FEMA Public Assistance Program (PA).....	7
FEMA Project Worksheets (PWs)	7
Request for Proposal (RFP).....	7
A Design Build Contract	7
TIMELINE: MODULAR/SPRUNG INSTALLATION	8
APPENDICES	9

INTRODUCTION

On September 6 and 16, 2017, Hurricanes Irma and Maria devastated the Virgin Islands. Leaving our Territory and educational system inutter chaos. Moving our community forward would be in the hearts of everyone in our community and in the Department of Education. The elderly, our children, the poor and those who are ill are the most affected by these circumstances. The Department of Education plays a unique role in our community; as a whole, our community is defined by the children enrolled in our educational system. This leaves us with a single choice of restoring instructional sessions as quickly as reasonably possible; to start our Territory towards the rebuilding our communities and restoring a sense of normalcy.

FIGURE 1. RECOVERY CONTINUUM – DESCRIPTION OF VIDE ACTIVITIES BY PHASE



STUDENT ENROLLMENT

The official total enrollment for SY 2017-2018 is **10,868** students: 5,301 in the St. Croix District and 5,567 in the St. Thomas-St. John District. Although our student enrollment has declined since Hurricanes Irma and Maria; historically, the Department expects these totals to increase dramatically bringing student enrollment totals much closer to 2016-2017 enrollment of 13,194. Parents need to know that we are committed to rebuilding our Territory's public school system. Parents should start making plans to return their children for the 2018-2019 school year.

If student enrollment follows the customary trends, areas with-in the Department conducting essential student services such as our School Lunch Programs, Procurement (Student Supplies), Maintenance, Student Transportation, and Instructional Personnel, including our Substitute Pool, will require the same operational out-put in SY 2017-2018 as required in SY 2016-2017. (See **Appendix A: Student Enrollment**)

PERSONNEL

The Department of Education, Division of Human Resources works daily with applicants who have indicated interest in being a member of the Virgin Islands Department of Education to include applicants from different countries. The Department has received an additional 60 separations; 17 teachers from the STTJ district and 13 from the STX district and the remaining 30 are support staff. The Department is currently utilizing the substitute pool, which has a total of 150 individuals; 62 in the STX district and 88 in the STTJ district.

It is important to note that retaining employees has become increasingly challenging as our cost of living is not commensurate with the current salaries offered to teachers.

To date we have a total of 137 vacancies; 47 in the STX district and 90 in the STTJ District.

Subject Area	ESL	Elem . Ed.	English	Math	Science	Social Studies	Foreign Lang.	PE	Art	Nurse	Voc. Ed.	Music	Librarians	Special Ed.
STX	1	12	9	4	2	3	2	3	4	1	1	2	2	1
STTJ	10	7	5	7	6	6	4	4	6	12	12	5	1	5
Total	11	19	14	11	8	9	6	7	10	13	13	7	3	6

UNAPOLOGETIC URGENCY

Hurricanes Irma and Maria left a void in the hearts of all Virgin Islanders and a determination to rebuild as quickly as possible. This thought raced through all our hearts and created an environment for change. At the Department of Education our responsibility to the community was clear. Assess our immediate community, determine how our families feared through these storms and get our facilities up and running.

Assessing Our Facilities

The Virgin Islands Department of Education consist of over 3 million square feet of property.

The Honorable Kenneth E. Mapp made an initial estimated request for emergency support from the Federal Government in excess of \$750,000,000.00 to help the Public Education System recover. The 2.9 million square feet of our public instructional education system suffered irreparable damage, some of which can be seen and damage that will surface years later. The most significant challenge the Department is facing across the Territory is scarcity of materials and A&E Contractors; slowing progress in addressing roof damage, which continues to allow moisture into some schools facilities.

During the disaster the shelter at E. Benjamin Oliver had to be moved to Lockhart Elementary School. The devastation was evident and our children were at the center of our concern after witnessing the damage of various neighborhoods. Our community was not well, we were experiencing tremendous hardship and our community was devastated.

As we began assessing the facilities it was clear that the damage sustained would impact the normal operations of our instructional sessions. Additionally. It would take a tremendous amount of effort to get our schools and facilities operational.

The Department of Education consists of 3 million square feet of real estate, which suffered damage of some kind throughout the educational system. The United States Army Corp of Engineers (USACE) conducted Rapid Assessments of all Territory's educational facilities. Nevertheless, the Department has only (13) thirteen of the rapid assessments. (**See Appendix B: Rapid Assessments**).

FEMA; the Environmental Protection Agency (EPA); and Education Officials conducted Site Evaluations for Category (CAT) A & B emergency work. Our Rough Order Magnitude Pricing for the educational system has reached 1.2 Billion. (**See Appendix C: Rough Order Magnitude Pricing**)

ACHIEVING NORMALCY

Instructional Education Facilities

Post disasters we have shuttered 10 school campuses in the Territory; seven (7) schools in the St. Croix District (STX) **(1)** Lew Muckel, **(2)** Pearl B. Larsen, **(3)** Eulalie Rivera, **(4)** Arthur A. Richards, **(5)** Elena Christian, **(6)** John Woodson and **(7)** Alexander Henderson; and three (3) schools in the St. Thomas/St. John District (STTJ) **(1)** Addelita Cancryn Junior High School, **(2)** E Benjamin Oliver Elementary School, and **(3)** Guy Benjamin Community Center.

Post disaster assessments were completed by administrative teams of their respective campuses to include usable space, personnel updates, operational status and available resources. In addition, the Army Corp of Engineers along with our maintenance division and engineering team conducted their own initial assessments. Cleaning contractors completed a thorough cleaning of our open campuses. Existing cleaning contracts are still in effect so the cleaning companies are deployed to clean at the end of every school day. Landscapers have assisted us with the cleanup of the debris and beautification of our campuses. Scopes of Work (SOW) and Project Worksheets (PWs) are being prepared by the Federal Emergency Management Agency after conducting assessments in conjunction with Witt O'Brien and VIDE Engineering team. (See [Appendix C: School Facility Listing](#))

State Operational Education Facilities

The Department has three Non-Instructional Sites that are abandoned that provide support services for students; STTJ Curriculum Center, STX Main Complex and STX Curriculum Center. The Curriculum Center in the St. Thomas/St. John District that houses the Superintendent's office including directors, coordinators, student services, federal grants; Procurement Warehouse including our Property Division; School Lunch Freezer and Refrigerator; and Maintenance Division has to be re-built. The most significant challenge the Department is facing across the Territory is scarcity of materials and A&E Contractors; roof damage continues to allow moisture into the schools facilities. (See [Appendix D: Curriculum Center Pictorial](#))

STRATEGIC APPROACH

Local Educational Agency

In an effort to provide an environment to promote excellence in Education in the 2018-2019 School Year, all schools must operate on a full session basis. Therefore, the ordering of Modular classrooms and Sprung Structures are essential to this expectation.

Our intention is to purchase through the Public Assistance (PA) program Modular classrooms to support full session instructional periods. This includes modular classrooms for the Territory; of the 26 schools only 4 require no modular classrooms. Additionally, Sprung Structures will be used in support of the athletics divisions for Gymnasiums, Kitchen and Cafeterias for the School Lunch Programs and school administration buildings. (See **Appendix E: Modular / Sprung Pictures**)

State Educational Agency

The Department has three Non-Instructional Sites that are shuttered that provide support services for students; STTJ Curriculum Center, STX Main Complex and STX Curriculum Center. The Curriculum Center in the St. Thomas/St. John District that houses the Superintendent's office including directors, coordinators, student services, federal grants; Procurement Warehouse including our Property Division; School Lunch Freezer and Refrigerator; and Maintenance Division has to be re-built.

Until Sprung Structures arrive on Island the Department will continue to use refrigerated trailers and coolers to keep frozen commodities fresh. The Procurement warehouse is temporarily housed at Addelita Cancryn Junior High School. (See **Appendix E: Modular / Sprung Pictures**)

MODULAR AND SPRUNG STRUCTURES

VIDE has received approval from FEMA to purchase Modular and Sprung Structures for the 2018-2019 School Year. Please note, negotiations are ongoing with FEMA regarding Sites. A final determination concerning permanent repairs and rebuilding has yet to be finalized.

FEMA Public Assistance Program (PA)

The Department is required under the PA program to manage the ordering, and solicitation for services encompassing temporary facilities and permanent repairs. This includes A&E Services for site preparation, procurement of modular classrooms and sprung shelters, shipment, delivery, and installation. (See [Appendix F: Modular/Sprung Sites](#))

FEMA Project Worksheets (PWs)

To date, FEMA has completed no Project Worksheets (PWs). FEMA has only provided drafts of PWs being worked on to include Modular classroom and sprung purchases. Additionally, FEMA has provided drafts of PWs involving Janitorial Service provided by Janitorial vendors immediately after the Disaster on St. Croix.

Modular / Sprung PW - \$24,000,000

Janitorial Services PW - \$450,000.00

Request for Proposal (RFP)

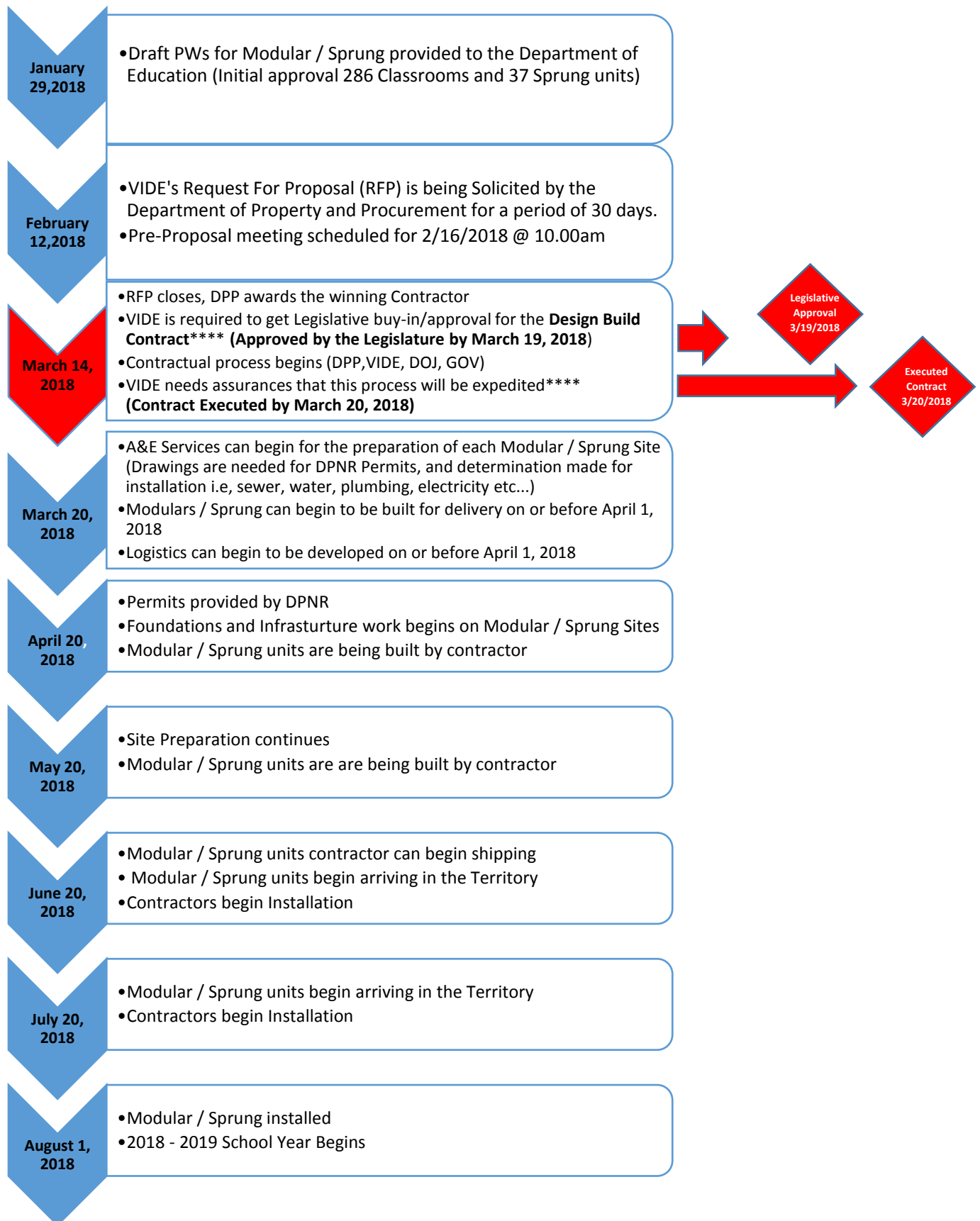
VIDE has submitted the Request For Proposal (RFP) # RFP 005-2018 (P) to the Department of Property and Procurement (DPP) and has a scheduled Pre-Proposal Meeting on February 16, 2018 at DPP with prospective vendors.

A Design Build Contract

With six (6) months before the official opening of the 2018-2019 school year, VIDE had to create a designed contract that would allow the process to move efficiently. We believe that a single contractor can better manage the overall process including A&E services, Construction and delivery of the Modular and Sprung units.

This is known as a Design Build contract (Nuts to Bolts); nevertheless under our current system we will have to ask the legislature to ratify the use of such a contract. Additionally, we will require a contract to be processed in a day to ensure that time factors do not interfere with the delivery and purchase of the classroom units.

TIMELINE: MODULAR / SPRUNG INSTALLATION



Virgin Islands Department of Education

Office of Planning, Research and Evaluation

Public Schools Enrollment by Grade

2017-2018



Districts\Schools	KG	01	02	03	04	05	06	07	08	09	10	11	12	Total
St. Thomas-St. John District	389	374	378	465	462	436	468	534	390	603	383	332	353	5,567
E. Benjamin Oliver Elementary School	94	57	68	77	73	63								432
Gladys A. Abraham Elementary School	32	44	30	43	33	45	52							279
Jane E. Tuitt Elementary School	32	26	28	31										117
Joseph Gomez Elementary School	49	52	50	71	56	68	70							416
Joseph Sibilly Elementary School	26	33	36	41	41	42	31							250
Leonard Dober Elementary School					49	38	41							128
Lockhart Elementary School	74	65	65	62	74	62	61							463
Ulla F. Muller Elementary School	35	45	31	58	59	47	59							334
Yvonne E. Milliner-Bowsky Elementary School	30	29	38	43	47	50	39							276
Julius E. Sprauve School	17	23	32	39	30	21	36	42	24					264
Bertha C. Boschulte Middle School							79	238	187					504
Addelita Cancryn Junior High School								254	179					433
Charlotte Amalie High School										373	220	201	209	1,003
Ivanna Eudora Kean High School										230	163	131	144	668
St. Croix District	343	371	402	433	403	397	380	421	381	565	491	369	345	5,301
Alexander Henderson Elementary School	38	38	44	50	39	44	47							300
Alfredo Andrews Elementary School	55	58	47	68	59	72	61							420
Juanita Gardine Elementary School	38	41	55	57	38	46	29							304
Claude O. Markoe Elementary School	65	41	60	63	54	48	50							381
Eulalie Rivera Elementary School	40	48	55	54	59	34	39							329
Lew Muckle Elementary School	31	49	31	56	43	51	53							314
Pearl B. Larsen Elementary School	30	41	50	33	51	50	50							305
Ricardo Richards Elementary School	46	55	60	52	60	52	51							376
Arthur A. Richards Junior High School								138	124					262
John H. Woodson Junior High School								174	147					321
Elena L. Christian Junior High School								109	110					219
St. Croix Central High School										319	247	199	135	900
St. Croix Educational Complex High School										246	244	170	210	870
Virgin Islands	732	745	780	898	865	833	848	955	771	1,168	874	701	698	10,868

ESF #3 USACE Infrastructure Assessment Planning & Response Team (IA-PRT)

EVENT: Hurricane Irma (Wed 6-Sep-2017) and Hurricane Maria (Tues 19-Sep-2017)

AREA IMPACTED: U.S. Virgin Islands

FACILITY CATEGORY: VI Dept. of Education (VIDE) School
FACILITY NAME: Julius E. Sprauve Elementary School
FACILITY LOCATION: St. John (STJ)
GPS COORDINATES: N 18.330562, W 64.793919
IA-PRT TRACKING #: STJ-012
DATE(S) OF ASSESSMENT: 11-Oct-2017

OVERALL CONDITION AT TIME OF ASSESSMENT: **GREEN** to **RED** (bldg. specific)

RED – Extreme hazards or unsafe situations observed by the IA-PRT at the time of the assessment. Significant risk or further damage or collapse. The degree of damage is such that the structure is believed to be in danger of collapse from either static conditions, subsequent winds or other storms, or the addition of occupant load. Unsafe for occupancy or entry.

YELLOW – Safety is questionable or hazardous conditions exist (or are believed to exist) that require restrictions on the occupancy or use of the structure. There is concern about the possibility of further damage due to continued exposure to weather conditions, which could lead to falling hazards or air quality issues (e.g. additional water damage, mold growth). Recommend limited entry and use, until hazards can be removed or a thorough Engineering Evaluation can be performed.

GREEN – No apparent hazards found, although repairs may be required. Original lateral- and vertical-load capacity has not been significantly decreased, and no potential instabilities were observed. No restriction on use or occupancy.

NOTE: The IA-PRT does NOT have the authority to condemn any facilities or structures; marking a building ‘Unsafe’ is not a demolition order.

CAUTION: The following assessment performed by the IA-PRT was an initial “rapid” assessment, based on the Rapid Evaluation Criteria presented in the Applied Technology Council’s ATC-45 Field Manual: Safety Evaluation of Buildings after Wind-Storms and Floods. This field manual provides guidelines and procedures for conducting post-windstorm and post-flood building safety evaluations. The purpose of these evaluations is to determine whether damaged or potentially damaged buildings are safe for use, or if entry should be restricted or prohibited. Further assessment(s) and data collection may be required before repair decisions are made. The primary purpose of this report is to advise of the condition of the facility for immediate continued use/occupancy. **REINSPECTION OF THE FACILITY IS RECOMMENDED.** The conclusions reached by engineers who re-examine the facility later should take precedence.

IA-PRT RAPID ASSESSMENT OBSERVATIONS:



Pre-Event



Post-Event

ESF #3 USACE Infrastructure Assessment Planning & Response Team (IA-PRT)

EVENT: Hurricane Irma (Wed 6-Sep-2017) and Hurricane Maria (Tues 19-Sep-2017)

AREA IMPACTED: U.S. Virgin Islands

FACILITY CATEGORY: VI Dept. of Education (VIDE) School
FACILITY NAME: Guy H. Benjamin Elementary School
FACILITY LOCATION: St. John (STJ)
GPS COORDINATES: N 18.347783, W 64.712367
IA-PRT TRACKING #: STJ-013
DATE(S) OF ASSESSMENT: 11-Oct-2017

OVERALL CONDITION AT TIME OF ASSESSMENT: **RED**

RED – Extreme hazards or unsafe situations observed by the IA-PRT at the time of the assessment. Significant risk or further damage or collapse. The degree of damage is such that the structure is believed to be in danger of collapse from either static conditions, subsequent winds or other storms, or the addition of occupant load. Unsafe for occupancy or entry.

YELLOW – Safety is questionable or hazardous conditions exist (or are believed to exist) that require restrictions on the occupancy or use of the structure. There is concern about the possibility of further damage due to continued exposure to weather conditions, which could lead to falling hazards or air quality issues (e.g. additional water damage, mold growth). Recommend limited entry and use, until hazards can be removed or a thorough Engineering Evaluation can be performed.

GREEN – No apparent hazards found, although repairs may be required. Original lateral- and vertical-load capacity has not been significantly decreased, and no potential instabilities were observed. No restriction on use or occupancy.

NOTE: The IA-PRT does NOT have the authority to condemn any facilities or structures; marking a building ‘Unsafe’ is not a demolition order.

CAUTION: The following assessment performed by the IA-PRT was an initial “rapid” assessment, based on the Rapid Evaluation Criteria presented in the Applied Technology Council’s ATC-45 Field Manual: Safety Evaluation of Buildings after Wind-Storms and Floods. This field manual provides guidelines and procedures for conducting post-windstorm and post-flood building safety evaluations. The purpose of these evaluations is to determine whether damaged or potentially damaged buildings are safe for use, or if entry should be restricted or prohibited. Further assessment(s) and data collection may be required before repair decisions are made. The primary purpose of this report is to advise of the condition of the facility for immediate continued use/occupancy. **REINSPECTION OF THE FACILITY IS RECOMMENDED.** The conclusions reached by engineers who re-examine the facility later should take precedence.

IA-PRT RAPID ASSESSMENT OBSERVATIONS:



Pre-Event



Post-Event

ESF #3 USACE Infrastructure Assessment Planning & Response Team (IA-PRT)

EVENT: Hurricane Irma (Wed 6-Sep-2017) and Hurricane Maria (Tues 19-Sep-2017)

AREA IMPACTED: U.S. Virgin Islands

FACILITY CATEGORY: VI Dept. of Education (VIDE) School
FACILITY NAME: Lockhart Elementary School
FACILITY LOCATION: St. Thomas (STT)
GPS COORDINATES: N 18.341751, W 64.9167
IA-PRT TRACKING #: STT-019 and STT-038
DATE(S) OF ASSESSMENT: 15-Sep-2017, 7-Oct-2017

OVERALL CONDITION AT TIME OF ASSESSMENT: **YELLOW**

RED – Extreme hazards or unsafe situations observed by the IA-PRT at the time of the assessment. Significant risk or further damage or collapse. The degree of damage is such that the structure is believed to be in danger of collapse from either static conditions, subsequent winds or other storms, or the addition of occupant load. Unsafe for occupancy or entry.

YELLOW – Safety is questionable or hazardous conditions exist (or are believed to exist) that require restrictions on the occupancy or use of the structure. There is concern about the possibility of further damage due to continued exposure to weather conditions, which could lead to falling hazards or air quality issues (e.g. additional water damage, mold growth). Recommend limited entry and use, until hazards can be removed or a thorough Engineering Evaluation can be performed.

GREEN – No apparent hazards found, although repairs may be required. Original lateral- and vertical-load capacity has not been significantly decreased, and no potential instabilities were observed. No restriction on use or occupancy.

NOTE: The IA-PRT does NOT have the authority to condemn any facilities or structures; marking a building ‘Unsafe’ is not a demolition order.

CAUTION: The following assessment performed by the IA-PRT was an initial “rapid” assessment, based on the Rapid Evaluation Criteria presented in the Applied Technology Council’s ATC-45 Field Manual: Safety Evaluation of Buildings after Wind-Storms and Floods. This field manual provides guidelines and procedures for conducting post-windstorm and post-flood building safety evaluations. The purpose of these evaluations is to determine whether damaged or potentially damaged buildings are safe for use, or if entry should be restricted or prohibited. Further assessment(s) and data collection may be required before repair decisions are made. The primary purpose of this report is to advise of the condition of the facility for immediate continued use/occupancy. **REINSPECTION OF THE FACILITY IS RECOMMENDED.** The conclusions reached by engineers who re-examine the facility later should take precedence.

IA-PRT RAPID ASSESSMENT OBSERVATIONS:



ESF #3 USACE Infrastructure Assessment Planning & Response Team (IA-PRT)

EVENT: Hurricane Irma (Wed 6-Sep-2017) and Hurricane Maria (Tues 19-Sep-2017)

AREA IMPACTED: U.S. Virgin Islands

FACILITY CATEGORY: VI Dept. of Education (VIDE) School
FACILITY NAME: Gladys A. Abraham Elementary School
FACILITY LOCATION: St. Thomas (STT)
GPS COORDINATES: N 18.344464, W 64.967726
IA-PRT TRACKING #: STT-033
DATE(S) OF ASSESSMENT: 04-Oct-2017

OVERALL CONDITION AT TIME OF ASSESSMENT: **YELLOW** to **RED** (bldg. specific)

RED – Extreme hazards or unsafe situations observed by the IA-PRT at the time of the assessment. Significant risk or further damage or collapse. The degree of damage is such that the structure is believed to be in danger of collapse from either static conditions, subsequent winds or other storms, or the addition of occupant load. Unsafe for occupancy or entry.

YELLOW – Safety is questionable or hazardous conditions exist (or are believed to exist) that require restrictions on the occupancy or use of the structure. There is concern about the possibility of further damage due to continued exposure to weather conditions, which could lead to falling hazards or air quality issues (e.g. additional water damage, mold growth). Recommend limited entry and use, until hazards can be removed or a thorough Engineering Evaluation can be performed.

GREEN – No apparent hazards found, although repairs may be required. Original lateral- and vertical-load capacity has not been significantly decreased, and no potential instabilities were observed. No restriction on use or occupancy.

NOTE: The IA-PRT does NOT have the authority to condemn any facilities or structures; marking a building ‘Unsafe’ is not a demolition order.

CAUTION: The following assessment performed by the IA-PRT was an initial “rapid” assessment, based on the Rapid Evaluation Criteria presented in the Applied Technology Council’s ATC-45 Field Manual: Safety Evaluation of Buildings after Wind-Storms and Floods. This field manual provides guidelines and procedures for conducting post-windstorm and post-flood building safety evaluations. The purpose of these evaluations is to determine whether damaged or potentially damaged buildings are safe for use, or if entry should be restricted or prohibited. Further assessment(s) and data collection may be required before repair decisions are made. The primary purpose of this report is to advise of the condition of the facility for immediate continued use/occupancy. **REINSPECTION OF THE FACILITY IS RECOMMENDED.** The conclusions reached by engineers who re-examine the facility later should take precedence.

IA-PRT RAPID ASSESSMENT OBSERVATIONS:



ESF #3 USACE Infrastructure Assessment Planning & Response Team (IA-PRT)

EVENT: Hurricane Irma (Wed 6-Sep-2017) and Hurricane Maria (Tues 19-Sep-2017)

AREA IMPACTED: U.S. Virgin Islands

FACILITY CATEGORY: VI Dept. of Education School
FACILITY NAME: Jane E. Tuitt Elementary School
FACILITY LOCATION: St. Thomas (STT)
GPS COORDINATES: N 18.344831, W 64.936242
IA-PRT TRACKING #: STT-040
DATE(S) OF ASSESSMENT: 10-Oct-2017

OVERALL CONDITION AT TIME OF ASSESSMENT: **GREEN**

RED – Extreme hazards or unsafe situations observed by the IA-PRT at the time of the assessment. Significant risk or further damage or collapse. The degree of damage is such that the structure is believed to be in danger of collapse from either static conditions, subsequent winds or other storms, or the addition of occupant load. Unsafe for occupancy or entry.

YELLOW – Safety is questionable or hazardous conditions exist (or are believed to exist) that require restrictions on the occupancy or use of the structure. There is concern about the possibility of further damage due to continued exposure to weather conditions, which could lead to falling hazards or air quality issues (e.g. additional water damage, mold growth). Recommend limited entry and use, until hazards can be removed or a thorough Engineering Evaluation can be performed.

GREEN – No apparent hazards found, although repairs may be required. Original lateral- and vertical-load capacity has not been significantly decreased, and no potential instabilities were observed. No restriction on use or occupancy.

NOTE: The IA-PRT does NOT have the authority to condemn any facilities or structures; marking a building ‘Unsafe’ is not a demolition order.

CAUTION: The following assessment performed by the IA-PRT was an initial “rapid” assessment, based on the Rapid Evaluation Criteria presented in the Applied Technology Council’s ATC-45 Field Manual: Safety Evaluation of Buildings after Wind-Storms and Floods. This field manual provides guidelines and procedures for conducting post-windstorm and post-flood building safety evaluations. The purpose of these evaluations is to determine whether damaged or potentially damaged buildings are safe for use, or if entry should be restricted or prohibited. Further assessment(s) and data collection may be required before repair decisions are made. The primary purpose of this report is to advise of the condition of the facility for immediate continued use/occupancy. **REINSPECTION OF THE FACILITY IS RECOMMENDED.** The conclusions reached by engineers who re-examine the facility later should take precedence.

IA-PRT RAPID ASSESSMENT OBSERVATIONS:



Pre-Event



Post-Event

ESF #3 USACE Infrastructure Assessment Planning & Response Team (IA-PRT)

EVENT: Hurricane Irma (Wed 6-Sep-2017) and Hurricane Maria (Tues 19-Sep-2017)

AREA IMPACTED: U.S. Virgin Islands

FACILITY CATEGORY: VI Dept. of Education (VIDE) School
FACILITY NAME: Leonard Dober Elementary School
FACILITY LOCATION: St. Thomas (STT)
GPS COORDINATES: N 18.341357, W 64.935452
IA-PRT TRACKING #: STT-042
DATE(S) OF ASSESSMENT: 05-Oct-2017

OVERALL CONDITION AT TIME OF ASSESSMENT: **YELLOW** to **RED** (bldg. specific)

RED – Extreme hazards or unsafe situations observed by the IA-PRT at the time of the assessment. Significant risk or further damage or collapse. The degree of damage is such that the structure is believed to be in danger of collapse from either static conditions, subsequent winds or other storms, or the addition of occupant load. Unsafe for occupancy or entry.

YELLOW – Safety is questionable or hazardous conditions exist (or are believed to exist) that require restrictions on the occupancy or use of the structure. There is concern about the possibility of further damage due to continued exposure to weather conditions, which could lead to falling hazards or air quality issues (e.g. additional water damage, mold growth). Recommend limited entry and use, until hazards can be removed or a thorough Engineering Evaluation can be performed.

GREEN – No apparent hazards found, although repairs may be required. Original lateral- and vertical-load capacity has not been significantly decreased, and no potential instabilities were observed. No restriction on use or occupancy.

NOTE: The IA-PRT does NOT have the authority to condemn any facilities or structures; marking a building ‘Unsafe’ is not a demolition order.

CAUTION: The following assessment performed by the IA-PRT was an initial “rapid” assessment, based on the Rapid Evaluation Criteria presented in the Applied Technology Council’s ATC-45 Field Manual: Safety Evaluation of Buildings after Wind-Storms and Floods. This field manual provides guidelines and procedures for conducting post-windstorm and post-flood building safety evaluations. The purpose of these evaluations is to determine whether damaged or potentially damaged buildings are safe for use, or if entry should be restricted or prohibited. Further assessment(s) and data collection may be required before repair decisions are made. The primary purpose of this report is to advise of the condition of the facility for immediate continued use/occupancy. **REINSPECTION OF THE FACILITY IS RECOMMENDED.** The conclusions reached by engineers who re-examine the facility later should take precedence.

IA-PRT RAPID ASSESSMENT OBSERVATIONS:



Pre-Event



Post-Event

ESF #3 USACE Infrastructure Assessment Planning & Response Team (IA-PRT)

EVENT: Hurricane Irma (Wed 6-Sep-2017) and Hurricane Maria (Tues 19-Sep-2017)

AREA IMPACTED: U.S. Virgin Islands

FACILITY CATEGORY: VI Dept. of Education (VIDE) School
FACILITY NAME: VIDE Curriculum Center & School Supply Warehouse
FACILITY LOCATION: St. Thomas (STT)
GPS COORDINATES: N 18.341024, W 64.886299
IA-PRT TRACKING #: STT-045
DATE(S) OF ASSESSMENT: 18-Oct-2017

OVERALL CONDITION AT TIME OF ASSESSMENT: **RED**

RED – Extreme hazards or unsafe situations observed by the IA-PRT at the time of the assessment. Significant risk or further damage or collapse. The degree of damage is such that the structure is believed to be in danger of collapse from either static conditions, subsequent winds or other storms, or the addition of occupant load. Unsafe for occupancy or entry.

YELLOW – Safety is questionable or hazardous conditions exist (or are believed to exist) that require restrictions on the occupancy or use of the structure. There is concern about the possibility of further damage due to continued exposure to weather conditions, which could lead to falling hazards or air quality issues (e.g. additional water damage, mold growth). Recommend limited entry and use, until hazards can be removed or a thorough Engineering Evaluation can be performed.

GREEN – No apparent hazards found, although repairs may be required. Original lateral- and vertical-load capacity has not been significantly decreased, and no potential instabilities were observed. No restriction on use or occupancy.

NOTE: The IA-PRT does NOT have the authority to condemn any facilities or structures; marking a building ‘Unsafe’ is not a demolition order.

CAUTION: The following assessment performed by the IA-PRT was an initial “rapid” assessment, based on the Rapid Evaluation Criteria presented in the Applied Technology Council’s ATC-45 Field Manual: Safety Evaluation of Buildings after Wind-Storms and Floods. This field manual provides guidelines and procedures for conducting post-windstorm and post-flood building safety evaluations. The purpose of these evaluations is to determine whether damaged or potentially damaged buildings are safe for use, or if entry should be restricted or prohibited. Further assessment(s) and data collection may be required before repair decisions are made. The primary purpose of this report is to advise of the condition of the facility for immediate continued use/occupancy. **REINSPECTION OF THE FACILITY IS RECOMMENDED.** The conclusions reached by engineers who re-examine the facility later should take precedence.

IA-PRT RAPID ASSESSMENT OBSERVATIONS:



ESF #3 USACE Infrastructure Assessment Planning & Response Team (IA-PRT)

EVENT: Hurricane Irma (Wed 6-Sep-2017) and Hurricane Maria (Tues 19-Sep-2017)

AREA IMPACTED: U.S. Virgin Islands

FACILITY CATEGORY: VI Dept. of Education (VIDE) School
FACILITY NAME: Alfredo Andrews Elementary School
FACILITY LOCATION: St. Croix (STX)
GPS COORDINATES: N 17.736034, W 64.781673
IA-PRT TRACKING #: STX-069
DATE(S) OF ASSESSMENT: 29-Sep-2017, 25-Oct-2017

OVERALL CONDITION AT TIME OF ASSESSMENT: **YELLOW**

RED – Extreme hazards or unsafe situations observed by the IA-PRT at the time of the assessment. Significant risk or further damage or collapse. The degree of damage is such that the structure is believed to be in danger of collapse from either static conditions, subsequent winds or other storms, or the addition of occupant load. Unsafe for occupancy or entry.

YELLOW – Safety is questionable or hazardous conditions exist (or are believed to exist) that require restrictions on the occupancy or use of the structure. There is concern about the possibility of further damage due to continued exposure to weather conditions, which could lead to falling hazards or air quality issues (e.g. additional water damage, mold growth). Recommend limited entry and use, until hazards can be removed or a thorough Engineering Evaluation can be performed.

GREEN – No apparent hazards found, although repairs may be required. Original lateral- and vertical-load capacity has not been significantly decreased, and no potential instabilities were observed. No restriction on use or occupancy.

NOTE: The IA-PRT does NOT have the authority to condemn any facilities or structures; marking a building ‘Unsafe’ is not a demolition order.

CAUTION: The following assessment performed by the IA-PRT was an initial “rapid” assessment, based on the Rapid Evaluation Criteria presented in the Applied Technology Council’s ATC-45 Field Manual: Safety Evaluation of Buildings after Wind-Storms and Floods. This field manual provides guidelines and procedures for conducting post-windstorm and post-flood building safety evaluations. The purpose of these evaluations is to determine whether damaged or potentially damaged buildings are safe for use, or if entry should be restricted or prohibited. Further assessment(s) and data collection may be required before repair decisions are made. The primary purpose of this report is to advise of the condition of the facility for immediate continued use/occupancy. **REINSPECTION OF THE FACILITY IS RECOMMENDED.** The conclusions reached by engineers who re-examine the facility later should take precedence.

IA-PRT RAPID ASSESSMENT OBSERVATIONS:



Pre-Event



Post-Event

NOTE: Post-Event imagery has distortion due to angle of aerial photography & combination of two or more photos. This was the only NOAA imagery of the school available, post-Maria

ESF #3 USACE Infrastructure Assessment Planning & Response Team (IA-PRT)

EVENT: Hurricane Irma (Wed 6-Sep-2017) and Hurricane Maria (Tues 19-Sep-2017)

AREA IMPACTED: U.S. Virgin Islands

FACILITY CATEGORY: VI Dept. of Education (VIDE) School
FACILITY NAME: Elena L. Christian Junior High School *closed in 2015*
FACILITY LOCATION: St. Croix (STX)
GPS COORDINATES: N 17.763396, W 64.737619
IA-PRT TRACKING #: STX-071
DATE(S) OF ASSESSMENT: 04-Oct-2017

OVERALL CONDITION AT TIME OF ASSESSMENT: UNKNOWN

RED – Extreme hazards or unsafe situations observed by the IA-PRT at the time of the assessment. Significant risk or further damage or collapse. The degree of damage is such that the structure is believed to be in danger of collapse from either static conditions, subsequent winds or other storms, or the addition of occupant load. Unsafe for occupancy or entry.

YELLOW – Safety is questionable or hazardous conditions exist (or are believed to exist) that require restrictions on the occupancy or use of the structure. There is concern about the possibility of further damage due to continued exposure to weather conditions, which could lead to falling hazards or air quality issues (e.g. additional water damage, mold growth). Recommend limited entry and use, until hazards can be removed or a thorough Engineering Evaluation can be performed.

GREEN – No apparent hazards found, although repairs may be required. Original lateral- and vertical-load capacity has not been significantly decreased, and no potential instabilities were observed. No restriction on use or occupancy.

NOTE: The IA-PRT does NOT have the authority to condemn any facilities or structures; marking a building ‘Unsafe’ is not a demolition order.

CAUTION: The following assessment performed by the IA-PRT was an initial “rapid” assessment, based on the Rapid Evaluation Criteria presented in the Applied Technology Council’s ATC-45 Field Manual: Safety Evaluation of Buildings after Wind-Storms and Floods. This field manual provides guidelines and procedures for conducting post-windstorm and post-flood building safety evaluations. The purpose of these evaluations is to determine whether damaged or potentially damaged buildings are safe for use, or if entry should be restricted or prohibited. Further assessment(s) and data collection may be required before repair decisions are made. The primary purpose of this report is to advise of the condition of the facility for immediate continued use/occupancy. **REINSPECTION OF THE FACILITY IS RECOMMENDED.** The conclusions reached by engineers who re-examine the facility later should take precedence.

IA-PRT RAPID ASSESSMENT OBSERVATIONS:



Pre-Event



Post-Event

ESF #3 USACE Infrastructure Assessment Planning & Response Team (IA-PRT)

EVENT: Hurricane Irma (Wed 6-Sep-2017) and Hurricane Maria (Tues 19-Sep-2017)

AREA IMPACTED: U.S. Virgin Islands

FACILITY CATEGORY: VI Dept. of Education (VIDE) School
FACILITY NAME: Lew Muckle Elementary School
FACILITY LOCATION: St. Croix (STX)
GPS COORDINATES: N 17.732138, W 64.7449
IA-PRT TRACKING #: STX-076
DATE(S) OF ASSESSMENT: 25-Oct-2017

OVERALL CONDITION AT TIME OF ASSESSMENT: **GREEN** to **YELLOW** (**bldg. specific**)

RED – Extreme hazards or unsafe situations observed by the IA-PRT at the time of the assessment. Significant risk or further damage or collapse. The degree of damage is such that the structure is believed to be in danger of collapse from either static conditions, subsequent winds or other storms, or the addition of occupant load. Unsafe for occupancy or entry.

YELLOW – Safety is questionable or hazardous conditions exist (or are believed to exist) that require restrictions on the occupancy or use of the structure. There is concern about the possibility of further damage due to continued exposure to weather conditions, which could lead to falling hazards or air quality issues (e.g. additional water damage, mold growth). Recommend limited entry and use, until hazards can be removed or a thorough Engineering Evaluation can be performed.

GREEN – No apparent hazards found, although repairs may be required. Original lateral- and vertical-load capacity has not been significantly decreased, and no potential instabilities were observed. No restriction on use or occupancy.

NOTE: The IA-PRT does NOT have the authority to condemn any facilities or structures; marking a building ‘Unsafe’ is not a demolition order.

CAUTION: The following assessment performed by the IA-PRT was an initial “rapid” assessment, based on the Rapid Evaluation Criteria presented in the Applied Technology Council’s ATC-45 Field Manual: Safety Evaluation of Buildings after Wind-Storms and Floods. This field manual provides guidelines and procedures for conducting post-windstorm and post-flood building safety evaluations. The purpose of these evaluations is to determine whether damaged or potentially damaged buildings are safe for use, or if entry should be restricted or prohibited. Further assessment(s) and data collection may be required before repair decisions are made. The primary purpose of this report is to advise of the condition of the facility for immediate continued use/occupancy. **REINSPECTION OF THE FACILITY IS RECOMMENDED.** The conclusions reached by engineers who re-examine the facility later should take precedence.

IA-PRT RAPID ASSESSMENT OBSERVATIONS:



Pre-Event



Post-Event

ESF #3 USACE Infrastructure Assessment Planning & Response Team (IA-PRT)

EVENT: Hurricane Irma (Wed 6-Sep-2017) and Hurricane Maria (Tues 19-Sep-2017)

AREA IMPACTED: U.S. Virgin Islands

FACILITY CATEGORY: VI Dept. of Education (VIDE) School
FACILITY NAME: Ricardo Richards Elementary School
FACILITY LOCATION: St. Croix (STX)
GPS COORDINATES: N 17.725096, W 64.760902
IA-PRT TRACKING #: STX-078
DATE(S) OF ASSESSMENT: 19-Oct-2017

OVERALL CONDITION AT TIME OF ASSESSMENT: **YELLOW**

RED – Extreme hazards or unsafe situations observed by the IA-PRT at the time of the assessment. Significant risk or further damage or collapse. The degree of damage is such that the structure is believed to be in danger of collapse from either static conditions, subsequent winds or other storms, or the addition of occupant load. Unsafe for occupancy or entry.

YELLOW – Safety is questionable or hazardous conditions exist (or are believed to exist) that require restrictions on the occupancy or use of the structure. There is concern about the possibility of further damage due to continued exposure to weather conditions, which could lead to falling hazards or air quality issues (e.g. additional water damage, mold growth). Recommend limited entry and use, until hazards can be removed or a thorough Engineering Evaluation can be performed.

GREEN – No apparent hazards found, although repairs may be required. Original lateral- and vertical-load capacity has not been significantly decreased, and no potential instabilities were observed. No restriction on use or occupancy.

NOTE: The IA-PRT does NOT have the authority to condemn any facilities or structures; marking a building ‘Unsafe’ is not a demolition order.

CAUTION: The following assessment performed by the IA-PRT was an initial “rapid” assessment, based on the Rapid Evaluation Criteria presented in the Applied Technology Council’s ATC-45 Field Manual: Safety Evaluation of Buildings after Wind-Storms and Floods. This field manual provides guidelines and procedures for conducting post-windstorm and post-flood building safety evaluations. The purpose of these evaluations is to determine whether damaged or potentially damaged buildings are safe for use, or if entry should be restricted or prohibited. Further assessment(s) and data collection may be required before repair decisions are made. The primary purpose of this report is to advise of the condition of the facility for immediate continued use/occupancy. **REINSPECTION OF THE FACILITY IS RECOMMENDED.** The conclusions reached by engineers who re-examine the facility later should take precedence.

IA-PRT RAPID ASSESSMENT OBSERVATIONS:



Pre-Event



Post-Event

ESF #3 USACE Infrastructure Assessment Planning & Response Team (IA-PRT)

EVENT: Hurricane Irma (Wed 6-Sep-2017) and Hurricane Maria (Tues 19-Sep-2017)

AREA IMPACTED: U.S. Virgin Islands

FACILITY CATEGORY: VI Dept. of Education (VIDE) School
FACILITY NAME: Arthur A. Richards Junior High School
FACILITY LOCATION: St. Croix (STX)
GPS COORDINATES: N 17.693586, W 64.880701
IA-PRT TRACKING #: STX-079
DATE(S) OF ASSESSMENT: 04-Oct-2017

OVERALL CONDITION AT TIME OF ASSESSMENT: **RED**

RED – Extreme hazards or unsafe situations observed by the IA-PRT at the time of the assessment. Significant risk or further damage or collapse. The degree of damage is such that the structure is believed to be in danger of collapse from either static conditions, subsequent winds or other storms, or the addition of occupant load. Unsafe for occupancy or entry.

YELLOW – Safety is questionable or hazardous conditions exist (or are believed to exist) that require restrictions on the occupancy or use of the structure. There is concern about the possibility of further damage due to continued exposure to weather conditions, which could lead to falling hazards or air quality issues (e.g. additional water damage, mold growth). Recommend limited entry and use, until hazards can be removed or a thorough Engineering Evaluation can be performed.

GREEN – No apparent hazards found, although repairs may be required. Original lateral- and vertical-load capacity has not been significantly decreased, and no potential instabilities were observed. No restriction on use or occupancy.

NOTE: The IA-PRT does NOT have the authority to condemn any facilities or structures; marking a building ‘Unsafe’ is not a demolition order.

CAUTION: The following assessment performed by the IA-PRT was an initial “rapid” assessment, based on the Rapid Evaluation Criteria presented in the Applied Technology Council’s ATC-45 Field Manual: Safety Evaluation of Buildings after Wind-Storms and Floods. This field manual provides guidelines and procedures for conducting post-windstorm and post-flood building safety evaluations. The purpose of these evaluations is to determine whether damaged or potentially damaged buildings are safe for use, or if entry should be restricted or prohibited. Further assessment(s) and data collection may be required before repair decisions are made. The primary purpose of this report is to advise of the condition of the facility for immediate continued use/occupancy. **REINSPECTION OF THE FACILITY IS RECOMMENDED.** The conclusions reached by engineers who re-examine the facility later should take precedence.

IA-PRT RAPID ASSESSMENT OBSERVATIONS:



Pre-Event



Post-Event

ESF #3 USACE Infrastructure Assessment Planning & Response Team (IA-PRT)

EVENT: Hurricane Irma (Wed 6-Sep-2017) and Hurricane Maria (Tues 19-Sep-2017)

AREA IMPACTED: U.S. Virgin Islands

FACILITY CATEGORY: VI Dept. of Education (VIDE) School
FACILITY NAME: Adult Education
FACILITY LOCATION: St. Croix (STX)
GPS COORDINATES: N 17.747823, W 64.71563
IA-PRT TRACKING #: STX-081
DATE(S) OF ASSESSMENT: 14-Oct-2017

OVERALL CONDITION AT TIME OF ASSESSMENT: **YELLOW**

RED – Extreme hazards or unsafe situations observed by the IA-PRT at the time of the assessment. Significant risk or further damage or collapse. The degree of damage is such that the structure is believed to be in danger of collapse from either static conditions, subsequent winds or other storms, or the addition of occupant load. Unsafe for occupancy or entry.

YELLOW – Safety is questionable or hazardous conditions exist (or are believed to exist) that require restrictions on the occupancy or use of the structure. There is concern about the possibility of further damage due to continued exposure to weather conditions, which could lead to falling hazards or air quality issues (e.g. additional water damage, mold growth). Recommend limited entry and use, until hazards can be removed or a thorough Engineering Evaluation can be performed.

GREEN – No apparent hazards found, although repairs may be required. Original lateral- and vertical-load capacity has not been significantly decreased, and no potential instabilities were observed. No restriction on use or occupancy.

NOTE: The IA-PRT does NOT have the authority to condemn any facilities or structures; marking a building ‘Unsafe’ is not a demolition order.

CAUTION: The following assessment performed by the IA-PRT was an initial “rapid” assessment, based on the Rapid Evaluation Criteria presented in the Applied Technology Council’s ATC-45 Field Manual: Safety Evaluation of Buildings after Wind-Storms and Floods. This field manual provides guidelines and procedures for conducting post-windstorm and post-flood building safety evaluations. The purpose of these evaluations is to determine whether damaged or potentially damaged buildings are safe for use, or if entry should be restricted or prohibited. Further assessment(s) and data collection may be required before repair decisions are made. The primary purpose of this report is to advise of the condition of the facility for immediate continued use/occupancy. **REINSPECTION OF THE FACILITY IS RECOMMENDED.** The conclusions reached by engineers who re-examine the facility later should take precedence.

IA-PRT RAPID ASSESSMENT OBSERVATIONS:



Pre-Event



Post-Event

**VIRGIN ISLANDS DEPARTMENT OF EDUCATION
ST. CROIX DISTRICT
DAMAGED FACILITY AND USE REPORT**

SCHOOL NAME	SCH.#	ADDRESS / GPS	CITY	STATE	COMMENTS
**Alexander Henderson Elementary	XMDOE01	No. 31, Estate Concordia (Frederiksted) / 17.70286 - 64.86736	STX	VI	Non-Operational Shuttered
**Claude O. Marko Elementary	XMDOE02	Plots 71-78 Mars Hill (Frederiksted) / 17.70452 - 64.87847	STX	VI	Operational
Evelyn M. Williams Elementary	XMDOE03	NO. 13A MT. PLEASANT, (Frederiksted) / 17.70827 - 64.81450	STX	VI	Closed Pre-Hurricane
**Eulalie R. Rivera Elementary	XMDOE04	NOS. 3 & 22A EST. PLESSEN (Frederiksted) / 17.72228 - 64.82034	STX	VI	Non-Operational Shuttered
**Juanita Gardine Elementary	XMDOE05	ESTATE RICHMOND (Christiansted) / 17.74585 - 64.71601	STX	VI	Operational
Lew Muckle Elementary	XMDOE06	310 SION FARM (Christiansted) / 17.73234 - 64.74478	STX	VI	Non-Operational Shuttered
**Pearl B. Larson Elementary	XMDOE07	NO. 7 ESTATE ST. PETERS (Christiansted) / 17.74444 - 64.68555	STX	VI	Non-Operational Shuttered
Ricardo Richards Elementary	XMDOE08	491 BARREN SPOT (Christiansted) / 17.72545 - 64.76019	STX	VI	Operational
Elena L. Christian Junior High School	XMDOE09	Route 1 Kingshill Star / 17.72725 - 64.78709			Current Campus (Charles Emanuel School)
**Alfredo Andrews Elementary	XMDOE10	11A Estate Friedensburg (Christiansted) / 17.36790 - 64.78092	STX	VI	Non-Operational Shuttered
Elena L. Christian Junior High School	XMDOE11	64/64AD/65AS La Grande Princess (Christiansted) / 17.76283 - 64.73780	STX	VI	Closed Pre-Hurricane & Relocated to Charles Emanuel Campus
John H. Woodson Junior High School	XMDOE12	RURAL ROUTE NO. 1 KINGSHILL (Christiansted) / 17.74214 - 64.78368	STX	VI	Non-Operational Shuttered
**Arthur A. Richards Junior High School	XMDOE13	20-21 Stoney Ground (Frederiksted) / 17.69387 - 64.88070	STX	VI	Non-Operational Shuttered
**Central High School	XMDOE14	RFD No. 2 Kingshill (Christiansted) / 17.72250 - 64.77850	STX	VI	Operational
**Educational Complex High School	XMDOE15	5A-5C VICORP Land Kingshill (Christiansted) / 17.72238 - 64.79802	STX	VI	Operational
**Educational Complex Vocational	XMDOE16	5A-5C VICORP Land Kingshill (Christiansted) / 17.72238 - 64.79802	STX	VI	Operational
Adult Education	XMDOE17	# 8 ESTATE RICHMOND / PENITENTIARY ROAD (Christiansted) (No GPS available)	STX	VI	Operational
Alternative Education	XMDOE18	4053 LA Grande Princess (Christiansted) / 17.75600 - 64.73156	STX	VI	Operational
** Headquarters	XMDOE19	21-33 Hospital Street (Christiansted) / 17.75479 - 64.73025	STX	VI	Non-Operational Shuttered
Special Education & Maintenance	XMDOE20	LA Grande Princess (Christiansted)	STX	VI	Non-Operational Shuttered
School Lunch Warehouse / Human Resources	XMDOE21	ESTATE COTTAGE / 17.72378 - 64.75548	STX	VI	Operational (Leased)
Curriculum Center		Kingshill (Christiansted)	STX	VI	Operational
Youth Rehabilitation Center (YRC)		Anna's Hope	STX	VI	Operational
Procurement Warehouse		Anna's Hope	STX	VI	Operational

Note: * * Indicates Full Day Assessment (Most Damaged Facilities) / **Shuttered Facilities (Awaiting Condemnation Determination)

**VIRGIN ISLANDS DEPARTMENT OF EDUCATION
ST. THOMAS/ST. JOHN DISTRICT
DAMAGED FACILITY AND USE REPORT**

SCHOOL NAME	SCH.#	ADDRESS / GPS	CITY	STATE	COMMENTS
** Julius Sprauve School	JMDOE01	14 18 ESTATE ENIGHED / 18.33056 - 64.79391	STJ	VI	Operational (Severely Damage) Double Session
** Guy Benjamin	JMDOE02	CORAL BAY / 18.34778 - 64.71236	STJ	VI	Non-Operational (Functioned as a Community Center Pre-Hurricane)
**E. Benjamin Oliver Elementary	TMDOE01	148 325 ANNAS RETREAT / 18.33614 - 64.88566	STT	VI	Non-Operational Shuttered
** Gladys A. Abraham Elementary	TMDOE02	68A ESTATE LINDBERG / 18.34446 - 64.96772	STT	VI	Non-Operational Shuttered
Jane E. Tuitt Elementary	TMDOE03	19 LEVOKI STRAEDE / 18.34483 - 64.93624	STT	VI	Operational
Joseph Gomez Elementary	TMDOE04	142 ANNAS RETREAT / 18.34279 - 64.88797	STT	VI	Operational / (Campus Partially Damaged)
Joseph Sibilly Elementary	TMDOE05	14, 15, 16 ESTATE ELIZABETH / 18.35204 - 64.93240	STT	VI	Operational / (Campus Partially Damaged)
Leonard Dober Elementary	TMDOE06	9A 10B KRONPRINSDSENS GADE / 18.34135 - 64.93545	STT	VI	Operational
Lockhart Elementary	TMDOE07	41 ESTATE THOMAS / 18.34175 - 64.91670	STT	VI	Operational
Ulla F. Muller Elementary	TMDOE08	7B ESTATE CONTANT / 18.33838 - 64.95200	STT	VI	Operational / Campus Shared with Gladys Abraham (Campus Partially Damaged)
Yvonne E. Milliner-Bowsky Elementary	TMDOE09	15B + 16 ESTATE MANDAHN / 18.35486 - 64.89899	STT	VI	Operational / Campus Shared with E. Benjamin Oliver (Campus Damaged) Admin bldg. non-operational
**Addelita Cancryn Junior High School	TMDOE10	1 CROWN BAY / 18.33730 - 64.94602	STT	VI	Non-Operational Shuttered
Bertha C. Boschulte Middle School	TMDOE11	9 1 and 12A BOVONI / 18.31772 - 64.89128	STT	VI	Operational / (Campus Partially Damaged)
Edith Williams Alternative	TMDOE12	RHYMER HIGHWAY / 18.33479 - 64.89539	STT	VI	Operational / (Campus Partially Damaged)
Adult Education	TMDOE13	COMMANDANT GADE / 18.34274 - 64.93125	STT	VI	Operational / (Campus Partially Damaged)
Charlotte Amalie High School	TMDOE14	8 and 9 ESTATE THOMAS / 18.34199 - 64.91975	STT	VI	Operational / (Campus Partially Damaged)
Ivanna Eudora Kean High School	TMDOE15	1 and 2 ESTATE NAZARETH / 18.32488 - 64.85452	STT	VI	Operational / (Campus Partially Damaged)
CTEC	TMDOE16	COMMANDANT GADE / 18.34102 - 64.88629	STT	VI	Operational / (Campus Partially Damaged)
**Curriculum Center	TMDOE19	4386 ANNAS RETREAT LAGA BUILDING / 18.341176 - 64.886164	STT	VI	Non-Operational Shuttered
Cultural Ed. / Special Nutrition		KONGENS 1C&1D DRONNINGENS 2A KINGS QTR	STT	VI	Operational / (Campus Partially Damaged)
Evelyn Marcelli Annex		HONDURAS 3 CROWN PRINCE	STT	VI	Operational / (Campus Partially Damaged)
Joseph Sibilly Annex		BONNE RESOLUTION LITTLE NORTHSIDE QTR	STT	VI	Operational / (Campus Partially Damaged)
Main Headquarters		1834 KONGENS GADE	STT	VI	Operational / (Campus Partially Damaged)
School Lunch Warehouse		SUBBASE	STT	VI	Operational / (Campus Partially Damaged)
Wheatley Skill Center		41 ESTATE THOMAS / 18.34175 - 64.91670	STT	VI	Operational / (Campus Partially Damaged)

Note: * * Indicates Full Day Assessment (Most Damaged Facilities) / **Shuttered Facilities (Awaiting Condemnation Determination)

Sprung Request at Nazareth Estate Track A OF 1&2 Red Hook QRT. accommodates Curriculum Center



•

Sprung Request at Nazareth Estate Track A OF 1&2 Red Hook QRT. accommodates Curriculum Center

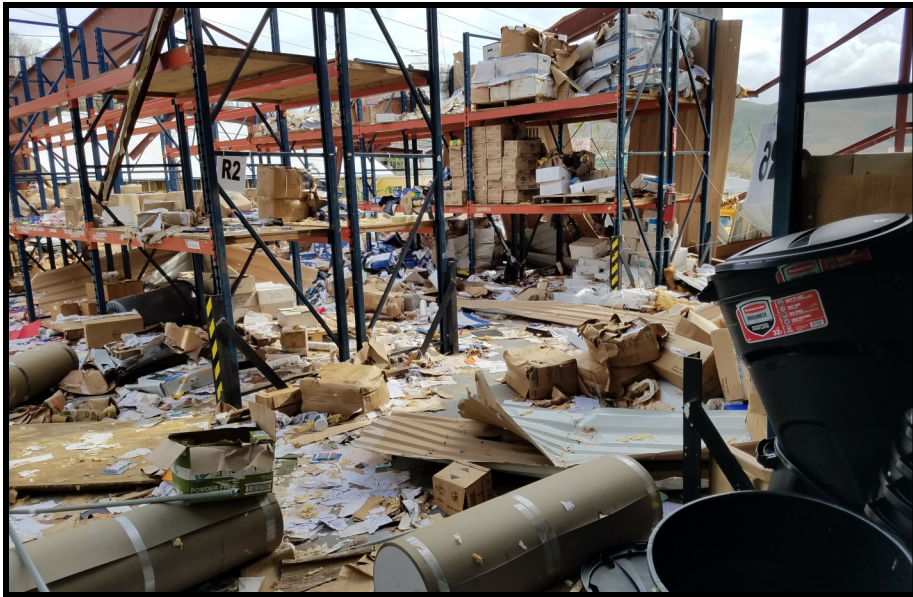


•

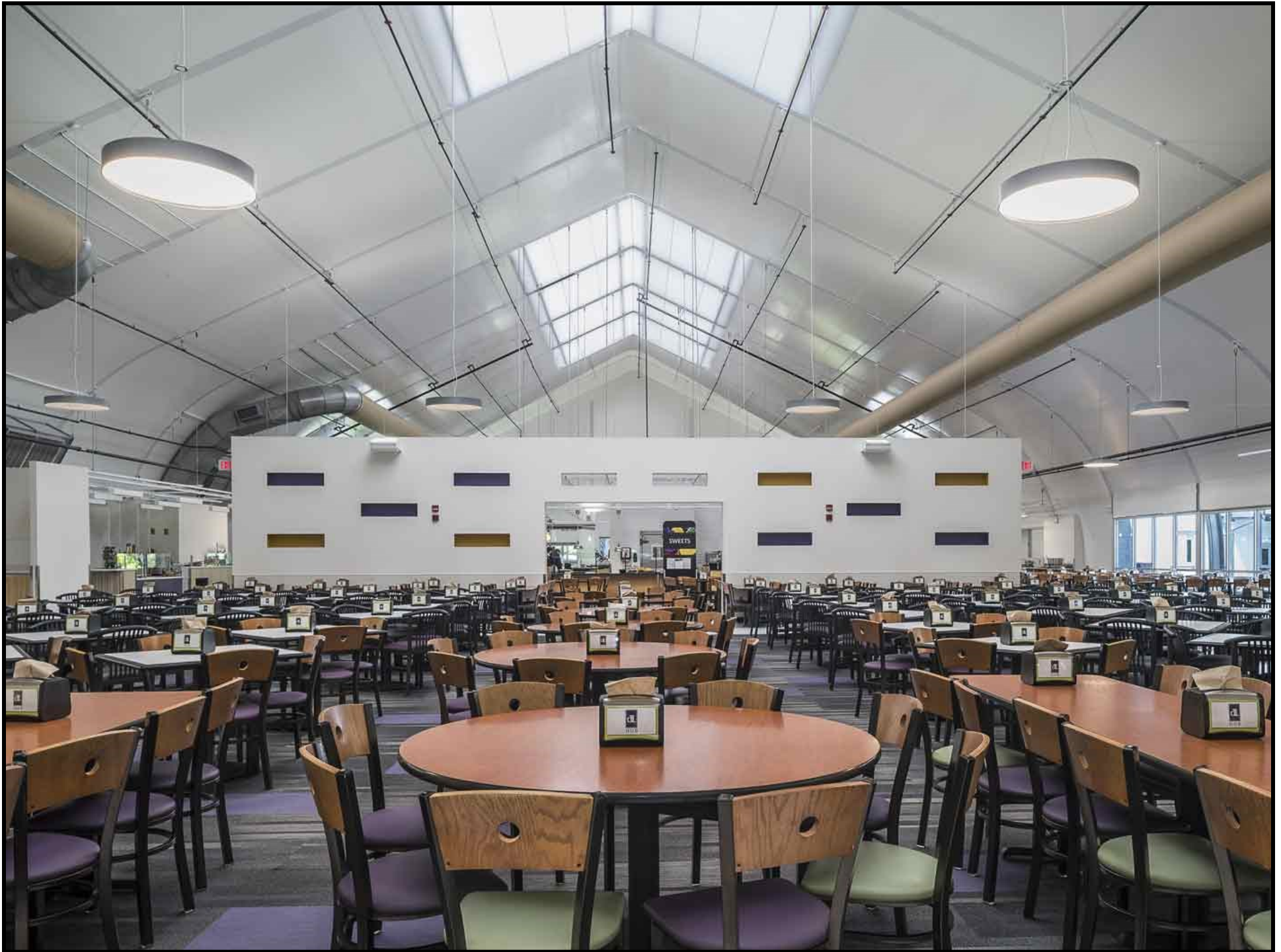


•

Sprung Request at Nazareth Estate Track A OF 1&2 Red Hook QRT. accommodates Curriculum Center



•



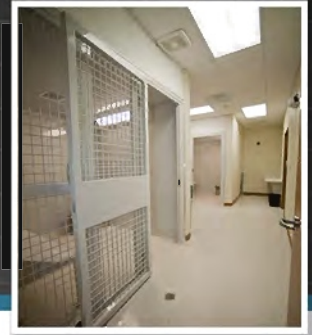
Cafeteria



Modular Classroom

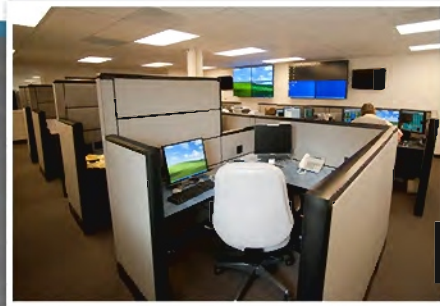


Modular Classroom



MODULAR GENIUS

SMART BUILDING



Thank You
for considering Modular Genius

We are a Full Service, Turn Key, Modular Building, General Contractor
Offering Permanent and Temporary Use, Commercial Modular Buildings
for Education, Office, Assembly and Healthcare.

We complete the project from Design to Occupancy.

Offices

Classrooms

Healthcare

Worship

Dormitories

Kitchens

Locker Rooms

Detention



Modular Genius, Inc.



888.420.1113

www.modulargenius.com



Gymnasium



Sprung Facilities:



Sprung Facilities:



Modular Sprung Map Legend



Administration - **Sprung Structure**



Kitchen / Cafeteria / Gymnasium - **Sprung Structure**



Structures = Classrooms

(1 Structure = 2 Classrooms)



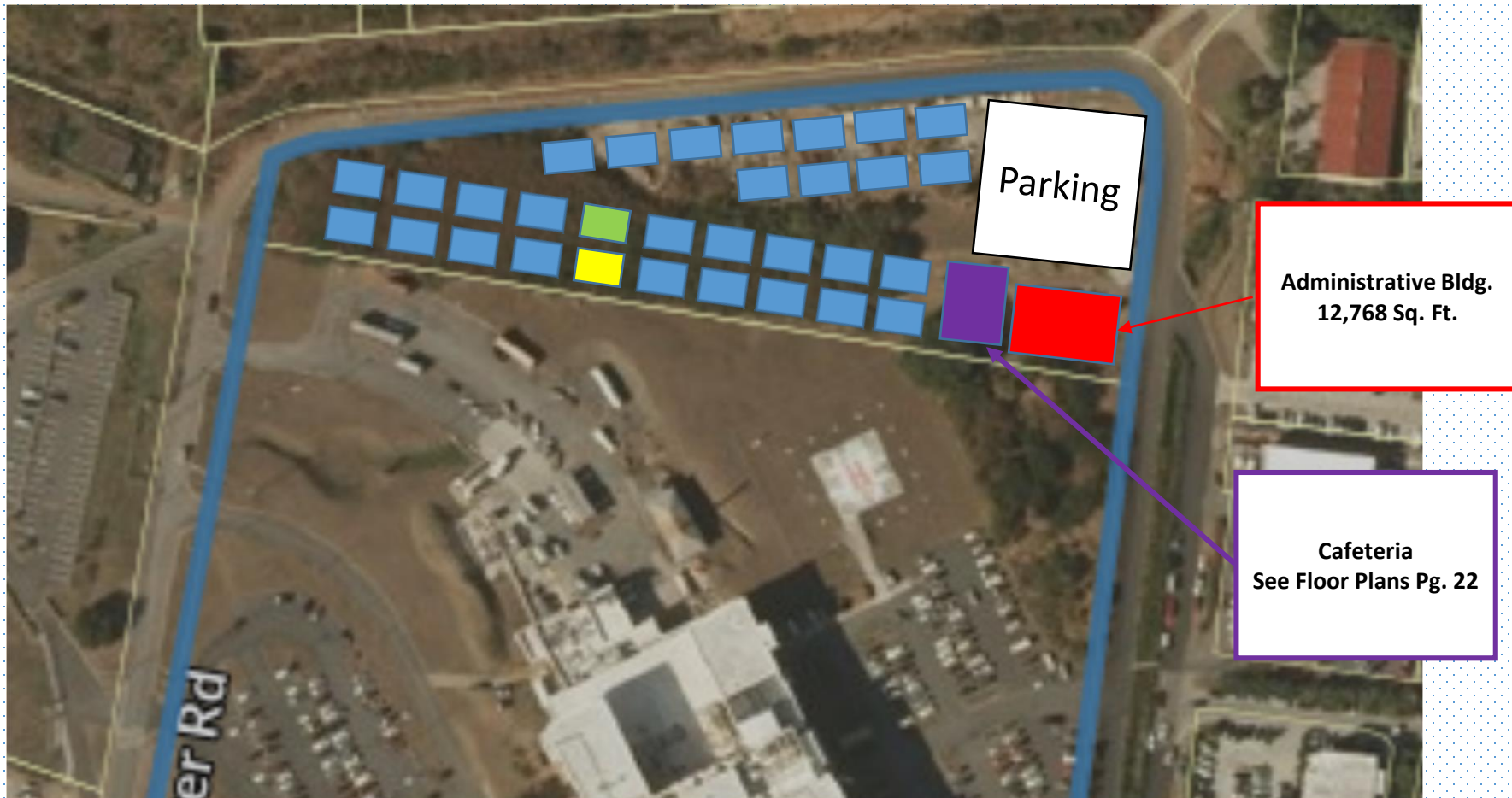
Girls Restrooms – (TBD included with Modular Classrooms)



Boys Restroom – (TBD included with Modular Classrooms)

Addelita Cancryn Junior High School

Proposed Modular & Sprung Layout At Plot 45A



Charlotte Amalie High School Modular Layout At Charlotte Amalie High School



Proposed Sprung
placement for
Gymnasium is on
Adjacent
Tennis Court
14,400Sq. Ft.

E. Benjamin Oliver Elementary School Grades 4-6 Proposed Modular Layout Site 1 At Yvonne-Milliner Bowsky ES



Yvonne Milliner-Bowsky ES.

15B + 16 Estate Mandal

GPS: 18.35486 - 64.89899

Gladys Abraham Elementary School Modular Layout @ Ulla Muller Elementary School



Administrative Bldg.
4,935 Sq. Ft.
1 Sprung unit

Joseph Gomez Elementary School Modular Layout At Joseph Gomez Elementary School



Guy Benjamin Community Center Modular Layout At Guy Benjamin Community Center



Ivanna Eudora Kean High School Modular Layout At Ivanna Eudora Kean High School

Marine Bldg.
1,560 Sq. Ft.
"Destroyed"
1 Sprung
Placement



Aquaponics Bldg.
3,528 Sq. Ft.
"Destroyed"
1 Sprung Placement

Curriculum Center Proposed Sprung Layout At Nazareth Estate Track A of 1&2 Red Hook QRT.



Wheatley Skill Center Proposed Sprung Layout At 41 Estate Thomas



Julius Sprauve School Modular Layout At Julius Sprauve School



Administrative Bldg.
851 Sq. Ft.
1 Sprung Unit

Modular Sprung Map Legend



Administration - **Sprung Structure**



Kitchen / Cafeteria / Gymnasium - **Sprung Structure**



Structures = Classrooms

(1 Structure = 2 Classrooms)



Girls Restrooms – (TBD included with Modular Classrooms)



Boys Restroom – (TBD included with Modular Classrooms)

Alfredo Andrews Elementary School Modular Layout @ Alfredo Andrews Elementary School



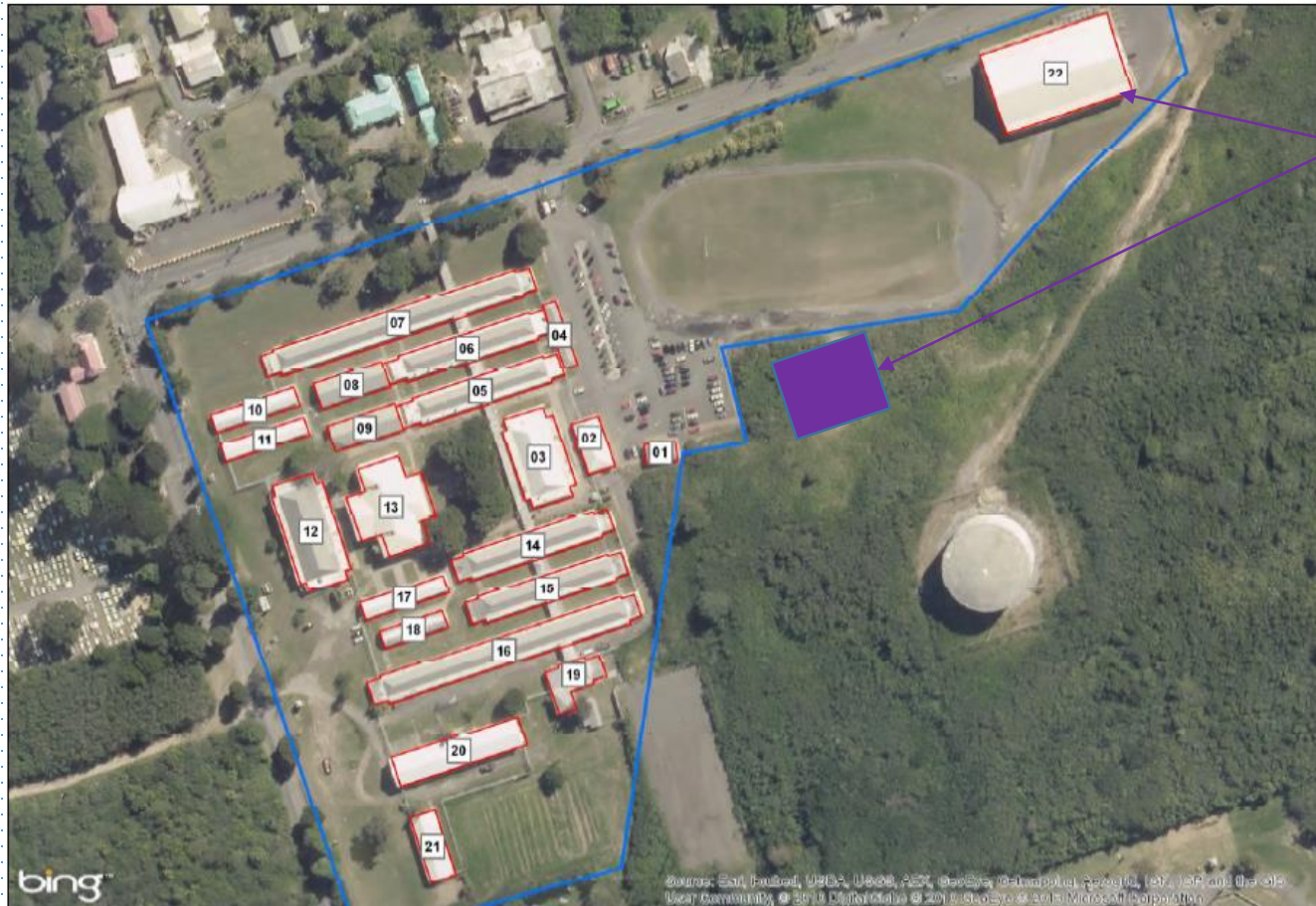
Administrative Bldg.
10,129 Sq. Ft.
Shared w/
John Woodson JHS

Cafeteria / Kitchen
10,383 Sq. Ft.
Shared w/
John Woodson JHS

Arthur A. Richards Junior High School Modular Layout @ Arthur A. Richards Junior High School



Central High School Sprung Layout @ Central High School



Damaged
Gymnasium
26,000 Sq. Ft.
Sprung
Structure

Elena Christian Junior High School Modular Layout @ Elena Christian Junior High School



Administrative
Bldg.
3,255 Sq. Ft.
Sprung Structure

Cafeteria /
Kitchen
4,800 Sq. Ft.
Sprung Structure

Eulalie Rivera Elementary School Modular Layout @ Eulalie Rivera Elementary School



Administrative Bldg.
4,681 Sq. Ft.
Sprung Structure

Alexander Henderson Elementary School Modular Layout @ Claude O. Markoe Elementary School



Administrative Bldg.
5,209 Sq. Ft.

Lew Muckle Elementary School Modular Layout @ Lew Muckle Elementary School



**Administrative Bldg.
2,564 Sq. Ft.
Sprung Structure**

Pearl B. Larsen Elementary School
Modular Layout @
Pearl B. Larsen Elementary School



John H. Woodson Junior High School Modular Layout @ Alfredo Andrews Elementary School



Gymnasium
10,800 Sq. Ft.
Shared Space w/
Alfredo Andrews ES

USVI SCHOOL NEW CONSTRUCTION COSTS
ROUGH ORDER OF MAGNITUDE PRICING

1/11/2018																			
	School	Location	Number of Students	Original School Area	Percentage of Work	New Construction Area Required	Unit Cost per SF for New Const	Demolition Costs	Excise Tax	Federal Tax	Construction Costs	Mold & Mildew Assessment & Remediation	Design Cost	PMCM	DAC	FF&E Cost	IT Equip., Computers, Hardware, & Software	Instructional Materials Cost/Student	TOTALS
Note:				SF		SF	\$300	\$50	3%	5%		\$15.00	12%	10%	3%	8%	25%	\$780.00	
	Leonard Dober Elementary	St. Thomas	129	18,080	15%	2,712	\$813,600	\$135,600	\$24,408	\$48,680	\$1,022,288	\$271,200	\$122,675	\$102,229	\$30,669	\$65,088	\$203,400.00	\$100,620	\$1,918,169
	Jane E. Tuitt Elementary	St. Thomas	195	15,488	35%	5,421	\$1,626,240	\$271,040	\$48,787	\$97,303	\$2,043,371	\$232,320	\$245,204	\$204,337	\$61,301	\$130,099	\$406,560	\$152,100	\$3,475,292
	Uller F. Muller Elementary	St. Thomas	516	39,682	35%	13,889	\$4,166,610	\$694,435	\$124,998	\$249,302	\$5,235,345	\$595,230	\$628,241	\$523,535	\$157,060	\$333,329	\$1,041,652.50	\$402,480	\$8,916,873
1	Gladys Abraham	St. Thomas	517	53,493	60%	32,096	\$9,628,740	\$1,604,790	\$288,862	\$576,120	\$12,098,512	\$802,395	\$1,451,821	\$1,209,851	\$362,955	\$770,299	\$2,407,185	\$403,260	\$19,506,279
	Lockhart Elementary	St. Thomas	662	59,530	25%	14,883	\$4,464,750	\$744,125	\$133,943	\$267,141	\$5,609,958	\$892,950	\$673,195	\$560,996	\$168,299	\$357,180	\$1,116,187.50	\$516,360	\$9,895,125
	Joseph Sibilly Elementary	St. Thomas	273	30,439	15%	4,566	\$1,369,755	\$228,293	\$41,093	\$81,957	\$1,721,097	\$456,585	\$206,532	\$172,110	\$51,633	\$109,580	\$342,438.75	\$212,940	\$3,272,916
	Bertha C. Boschulte Middle School	St. Thomas	575	115,470	25%	28,868	\$8,660,250	\$1,443,375	\$259,808	\$518,172	\$10,881,604	\$1,732,050	\$1,305,792	\$1,088,160	\$326,448	\$692,820	\$2,165,063	\$448,500	\$18,640,438
	Charlotte Amalie High School	St. Thomas	1580	192,908	60%	115,745	\$34,723,440	\$5,787,240	\$1,041,703	\$2,077,619	\$43,630,002	\$2,893,620	\$5,235,600	\$4,363,000	\$1,308,900	\$2,777,875	\$8,680,860	\$1,232,400	\$70,122,258
	Raphael O. Wheatley Skills Center	St. Thomas	25	11,550	40%	4,620	\$1,386,000	\$231,000	\$41,580	\$82,929	\$1,741,509	\$173,250	\$208,981	\$174,151	\$52,245	\$110,880	\$346,500	\$19,500	\$2,827,016
	Day Adult	St. Thomas				-	\$0	\$0	\$0	\$0	\$0	\$0	\$0	\$0	\$0	\$0	\$0	\$0	\$0
1	E. Benjamin Oliver Elementary	St. Thomas	548	54,677	100%	54,677	\$16,403,100	\$2,733,850	\$492,093	\$981,452	\$20,610,495	\$820,155	\$2,473,259	\$2,061,050	\$618,315	\$1,312,248	\$4,100,775	\$427,440	\$32,423,737
	Bowsky (Merged with EBO)	St. Thomas	460	53,978	25%	13,495	\$4,048,350	\$674,725	\$121,451	\$242,226	\$5,086,752	\$809,670	\$610,410	\$508,675	\$152,603	\$323,868	\$1,012,088	\$358,800	\$8,862,865
	Kean	St. Thomas	995	134,313	35%	47,010	\$14,102,865	\$2,350,478	\$423,086	\$843,821	\$17,720,250	\$2,014,695	\$2,126,430	\$1,772,025	\$531,607	\$1,128,229	\$3,525,716	\$776,100	\$29,595,053
	Cancryn	St. Thomas	598	113,806	100%	113,806	\$34,141,800	\$5,690,300	\$1,024,254	\$2,042,818	\$42,899,172	\$1,707,090	\$5,147,901	\$4,289,917	\$1,286,975	\$2,731,344	\$8,535,450	\$466,440	\$67,064,289
1	Gomez	St. Thomas	585	61,266	60%	36,760	\$11,027,880	\$1,837,980	\$330,836	\$659,835	\$13,856,531	\$918,990	\$1,662,784	\$1,385,653	\$415,696	\$882,230	\$2,756,970	\$456,300	\$22,335,154
	STJ Curriculum Center	St. Thomas	42	53,990	100%	53,990	\$16,197,000	\$2,699,500	\$485,910	\$969,121	\$20,351,531	\$809,850	\$2,442,184	\$2,035,153	\$610,546	\$1,295,760	\$4,049,250	\$32,760	\$31,627,033
	VIDE STJ Headquarters	St. Thomas	93	21,200	15%	3,180	\$954,000	\$159,000	\$28,620	\$57,081	\$1,198,701	\$318,000	\$143,844	\$119,870	\$76,320	\$238,500	\$72,540	\$2,203,736	
	Marcellis Annex School	St. Thomas		3,890	10%	389	\$116,700	\$19,450	\$3,501	\$6,983	\$146,634	\$58,350	\$17,596	\$14,663	\$4,399	\$9,336	\$29,175		
	CTEC	St. Thomas																	
	Edith Williams Alternative Academy	St. Thomas	40	14,182	25%	3,546	\$1,063,650	\$177,275	\$31,910	\$63,642	\$1,336,476	\$212,730	\$160,377	\$133,648	\$40,094	\$85,092	\$265,913	\$31,200	\$2,265,530
	TOTALS		7833	1,047,942		549,649	\$164,894,730	\$27,482,455	\$4,946,842	\$9,866,201	\$207,190,228	\$15,719,130	\$24,862,827	\$20,719,023	\$6,215,707	\$13,191,578	\$41,223,683	\$6,109,740	\$334,951,763

	School	Location	Number of Students	Original School Area	Percentage of Work	New Construction Area Required	Unit Cost per SF for New Const	Demolition Costs	Excise Tax	Federal Tax	Construction Costs	Mold & Mildew Assessment & Remediation	Design Cost	PMCM	DAC	FF&E Cost	IT Equip., Computers, Hardware, & Software	Instructional Materials Cost/Student	TOTALS
Note:				SF		SF	\$300	\$50	3%	5%		\$15.00	12%	10%	3%	8%	25%	\$780.00	
	Guy Benjamin School	St. John		10,032	25%	2,508	\$752,400	\$125,400	\$22,572	\$45,019	\$945,391	\$150,480	\$113,447	\$94,539.06	\$28,361.72	\$60,192	\$188,100	\$0	\$1,580,510
	Julius Sprauve School	St. John	340	52,128	25%	13,032	\$3,909,600	\$651,600	\$117,288	\$233,924	\$4,912,412	\$781,920	\$589,489	\$491,241	\$147,372	\$312,768	\$977,400	\$265,200	\$8,477,804
			340	62,160		15,540	\$4,662,000	\$777,000	\$139,860	\$278,943	\$5,857,803	\$932,400	\$702,936	\$585,780	\$175,734	\$372,960	\$1,165,500	\$265,200	\$10,058,314

	School	Location	Number of Students	Original School Area	Percentage of Work	New Construction Area Required	Unit Cost per SF for New Const	Demolition Costs	Excise Tax	Federal Tax	Construction Costs	Mold & Mildew Assessment & Remediation	Design Cost	PMCM	DAC	FF&E Cost	IT Equip., Computers, Hardware, & Software	Instructional Materials Cost/Student	TOTALS
Note:				SF		SF	\$300	\$50	3%	5%		\$15.00	12%	10%	3%	8%	25%	\$780.00	
1	Alexander Henderson	St. Croix District	495	56,450	60%	33,870	\$10,161,000	\$1,693,500	\$304,830	\$607,966.50	\$12,767,297	\$846,750	\$1,532,076	\$1,276,730	\$383,019	\$812,880	\$2,540,250	\$386,100	\$20,545,101
1	Claude O. Markoe	St. Croix District	312	91,326	60%	54,796	\$16,438,680	\$2,739,780	\$493,160	\$983,581.02	\$20,655,201	\$1,369,890	\$2,478,624	\$2,065,520	\$619,656	\$1,315,094	\$4,109,670	\$243,360	\$32,857,016
1	Evelyn Williams	St. Croix District	378	69,302	60%	41,581	\$12,474,360	\$2,079,060	\$374,231	\$746,382.54	\$15,674,033	\$1,039,530	\$1,880,884	\$1,567,403	\$470,221	\$997,949	\$3,118,590	\$294,840	\$25,043,450
1	Eulalie Rivera	St. Croix District	354	92,157	60%	55,294	\$16,588,260	\$2,764,710	\$497,648	\$992,530.89	\$20,843,149	\$1,382,355	\$2,501,178	\$2,084,315	\$625,294	\$1,327,061	\$4,147,065	\$276,120	\$33,186,537
1	Juanita Gardine	St. Croix District	290	76,476	60%	45,886	\$13,765,680	\$2,294,280	\$412,970	\$823,646.52	\$17,296,577	\$1,147,140	\$2,075,589	\$1,729,658	\$518,897	\$1,101,254	\$3,441,420	\$226,200	\$27,536,736
1	Lew Muckle	St. Croix District	434	49,533	60%	29,720	\$8,915,940	\$1,485,990	\$267,478	\$533,470.41	\$11,202,879	\$742,995	\$1,344,345	\$1,120,288	\$336,086	\$713,275	\$2,228,985	\$338,520	\$18,027,373
1	Pearle B. Larsen	St. Croix District	508	84,359	60%	50,615	\$15,184,620	\$2,530,770	\$455,539	\$908,546.43	\$19,079,475	\$1,265,385	\$2,289,537	\$1,907,948	\$572,384	\$1,214,770	\$3,796,155	\$396,240	\$30,521,893
1	Ricardo Richards	St. Croix District	520	41,385	60%	24,831	\$7,449,300	\$1,241,550	\$223,479	\$445,716.45	\$9,360,045	\$620,775	\$1,123,205	\$936,005	\$280,801	\$595,944	\$1,862,325	\$405,600	\$15,184,701
1	Charles H. Emanuel	St. Croix District	314	70,562	60%	42,337	\$12,701,160	\$2,116,860	\$381,035	\$759,952.74	\$15,959,008	\$1,058,430	\$1,915,081	\$1,595,901	\$478,770	\$1,016,093	\$3,175,290	\$244,920	\$25,443,492
1	Alfredo Andrews	St. Croix District	348	56,450	60%	33,870	\$10,161,000	\$1,693,500	\$304,830	\$607,966.50	\$12,767,297	\$846,750	\$1,532,076	\$1,276,730	\$383,019	\$812,880	\$2,540,250	\$271,440	\$20,430,441
	Arthur A. Richards	St. Croix District	417	128,836	100%	128,836	\$38,650,800	\$6,441,800	\$1,159,524	\$2,312,606.20	\$48,564,730	\$1,932,540	\$5,827,768	\$4,856,473	\$1,456,942	\$3,092,064	\$9,662,700	\$325,260	\$75,718,477
	Elena L. Christian (Formerly Charles Emanuel)	St. Croix District	349	80,667	100%	80,667	\$24,200,100	\$4,033,350	\$726,003	\$1,447,972.65	\$30,407,426	\$1,210,005	\$3,648,891	\$3,040,743	\$912,223	\$1,936,008	\$6,050,025	\$272,220	\$47,477,540
	John H. Woodson	St. Croix District	481	125,720	25%	31,430	\$9,429,000	\$1,571,500	\$282,870	\$564,168.50	\$11,847,539	\$1,885,800	\$1,421,705	\$1,184,754	\$355,426	\$754,320	\$2,357,250.00	\$375,180	\$20,181,973
	St. Croix Central High	St. Croix District	1174	217,849	25%	54,462	\$16,338,675	\$2,723,113	\$490,160	\$977,597.39	\$20,529,545	\$3,267,735	\$2,463,545	\$2,052,955	\$615,886	\$1,307,094	\$4,084,668.75	\$915,720	\$35,237,149
	St. Croix Educational Complex	St. Croix District	1386	314,319	25%	78,580	\$23,573,925	\$3,928,988	\$707,218	\$1,410,506.51	\$29,620,637	\$4,714,785	\$3,554,476	\$2,962,064	\$888,619	\$1,885,914	\$5,893,481	\$1,081,080	\$50,601,056
	STX Curriculum Center	St. Croix District	30	11,360								\$170,400						\$23,400	\$193,800
	STX Maintenance	St. Croix District	18	6,000								\$90,000						\$14,040	\$104,040
	State Warehouse	St. Croix District	5	4,800								\$72,000							\$72,000
	STX VIDE Headquarters	St. Croix District	30	5,658								\$84,870							\$84,870
	Special Ed	St. Croix District	35	7,020								\$105,300							\$105,300
	St. Croix Educational Vocational School (Career and technical Educational Center)	St. Croix District	640	314,319	25%	78,580	\$23,573,925	\$3,928,988	\$707,218	\$1,410,506.51	\$29,620,637	\$4,714,785	\$3,554,476	\$2,962,064	\$888,619	\$1,885,914	\$5,893,481	\$499,200	\$50,019,176
	Adult Education Center	St. Croix District	30	8,420	35%	2,947	\$884,100	\$147,350	\$26,523	\$52,898.65	\$1,110,872	\$126,300	\$133,305	\$111,087	\$33,326	\$70,728	\$221,025	\$23,400	\$1,830,043
	St. Croix Alternative Education Program	St. Croix District	22	8,225	25%	2,056	\$616,875	\$102,813	\$18,506	\$36,909.69	\$775,103	\$123,375	\$93,012	\$77,510	\$23,253	\$49,350	\$154,219	\$17,160	\$1,312,983
	TOTALS		Totals: 8570	1,921,193		870,358	\$261,107,400	\$43,517,900	\$7,833,222	\$15,622,926	\$328,081,448	\$28,817,895	\$39,369,774	\$32,808,145	\$9,842,443	\$20,888,592	\$65,276,850	\$6,630,000	\$531,715,147

Total Territorial Students:	16743											\$45,469,425				Contingency		40%	\$350,690,089.66
Total Territorial Schools SF:		3,031,295														Grand Total			\$1,227,415,314

NOTES:

Note 1 - Quantity of damage is based on assessments provided by the USVI School Districts, rather than from AECOM Observations